

THE  
SUITE  
COLLECTION



FOUR SEASONS  
HOTEL  
LAS VEGAS



EXPERIENCE  
**LAS VEGAS**  
WITH FOUR SEASONS COMFORT AND STYLE

Elevate your stay at Four Seasons Hotel Las Vegas with our collection of 81 sophisticated suites – many with postcard views of the world-famous Las Vegas Strip. Positioned on the 35<sup>th</sup> to 39<sup>th</sup> floors of the Mandalay Bay Resort, these stylish one- to three-bedroom accommodations provide added space and privacy for luxurious relaxation, entertaining or business meetings. Legendary Four Seasons service places them in a category all their own.





THE ICONIC

# PRESIDENTIAL STRIP-VIEW SUITES





## PRESIDENTIAL STRIP-VIEW SUITES

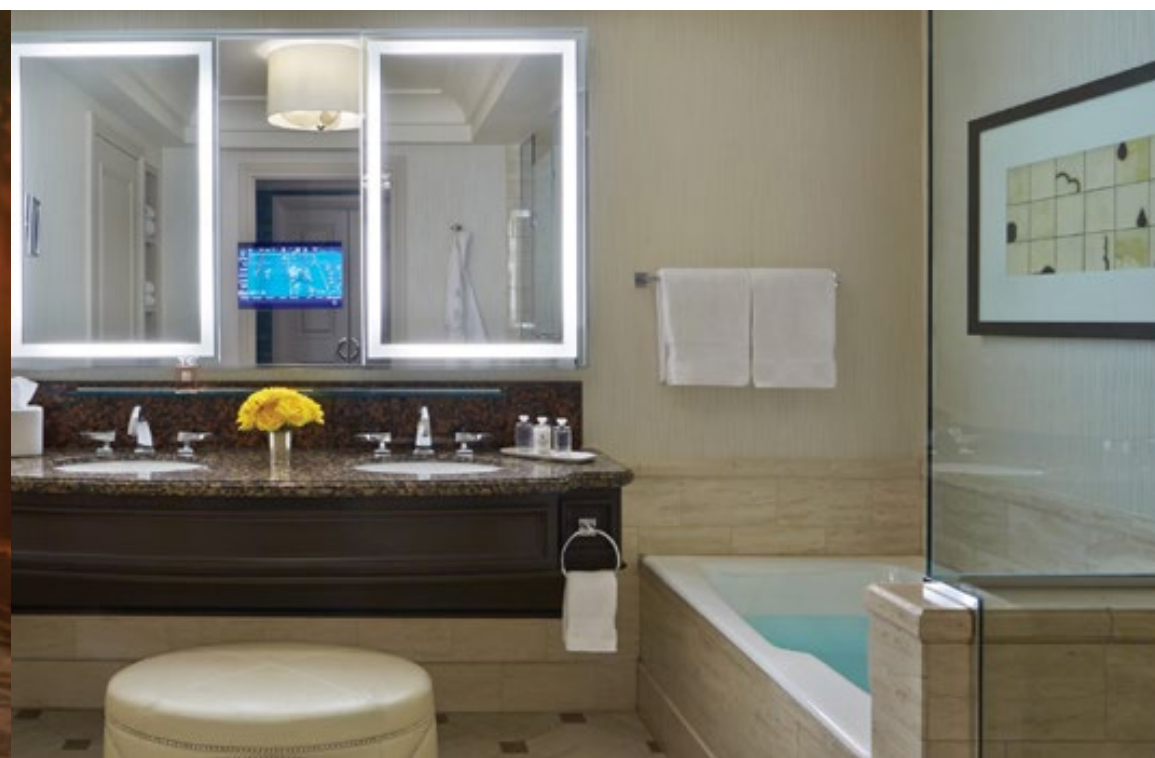
The ultimate in Las Vegas prestige – ideal for business entertaining or personal indulgence – our one-bedroom Presidential Strip-View Suites offer 2,225 sq. ft. (207 m<sup>2</sup>) of sleek, contemporary design.

From the entry foyer with powder room, step into a sprawling living room with a choice of seating areas and an executive desk – all backed by wraparound, floor-to-ceiling panoramas of the Las Vegas Strip. The separate dining room for eight guests connects to a convenient kitchen pantry. With sunrise views, the secluded master bedroom features an ensuite bath and oversized walk-in closet. These suites are also available with two or three bedrooms.

[VIEW FLOOR PLAN ▶](#)  
[COMPARISON CHART ▶](#)  
[SUITE AMENITIES ▶](#)

[MORE INFORMATION ON FOURSEASONS.COM](#)

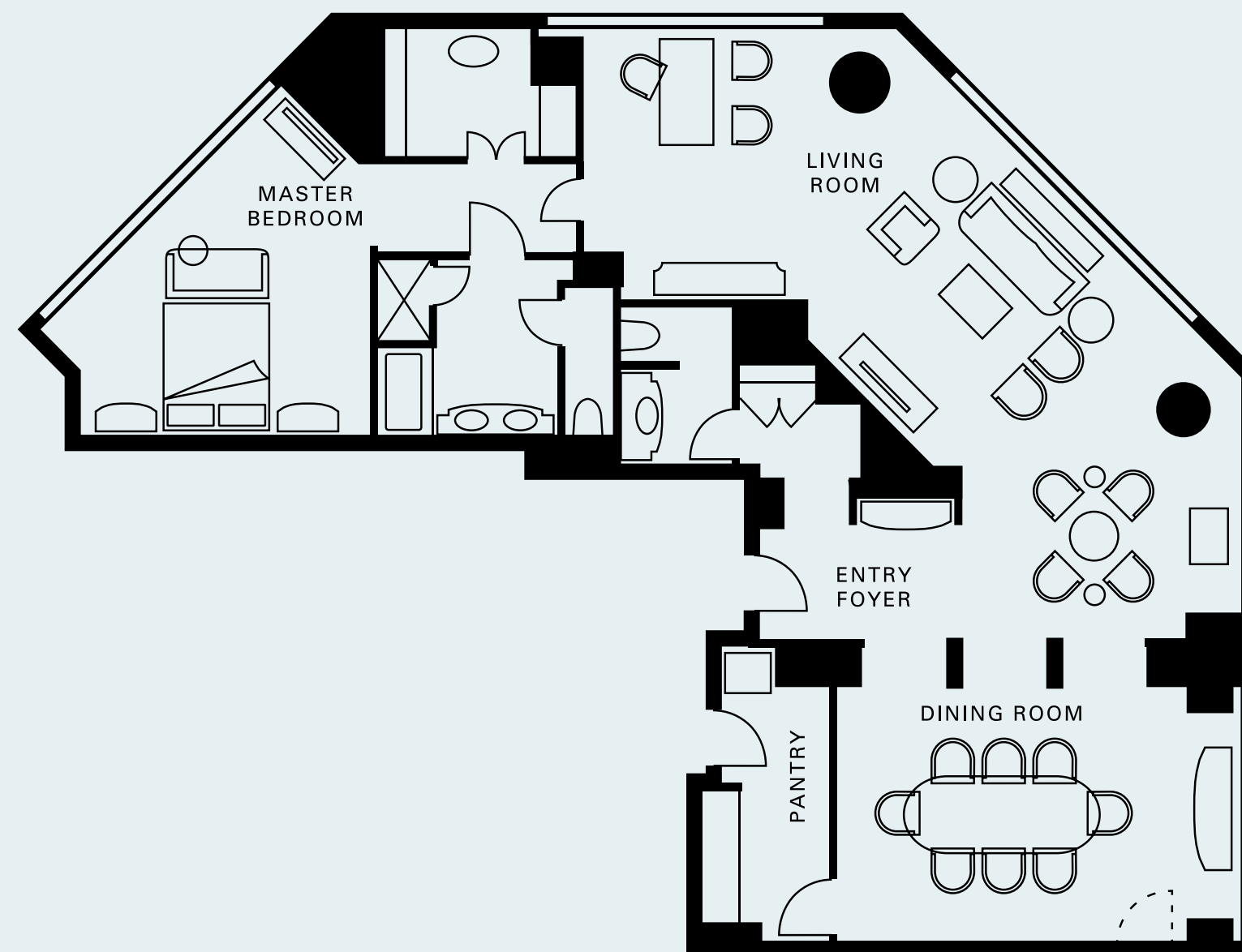
[RATES AND AVAILABILITY ▶](#)





## PRESIDENTIAL STRIP-VIEW SUITES

<b>SIZE</b>	<ul style="list-style-type: none"> <li>• One-bedroom: 2,225 sq. ft. (207 m<sup>2</sup>)</li> <li>• Two-bedroom: 2,725 sq. ft. (253 m<sup>2</sup>)</li> <li>• Three-bedroom: 3,225 sq. ft. (300 m<sup>2</sup>)</li> </ul>
<b>NUMBER OF SUITES</b>	5
<b>LOCATION</b>	35th to 39th floors
<b>VIEW</b>	Entire Las Vegas Strip, including sunrise over the city
<b>OCCUPANCY</b>	<ul style="list-style-type: none"> <li>• One-bedroom: 4 adults or 2 adults and 3 children</li> <li>• Two-bedroom: 7 adults or 4 adults and 4 children</li> <li>• Three-bedroom: 10 adults or 6 adults and 5 children</li> </ul>
<b>BEDS</b>	<ul style="list-style-type: none"> <li>• One-bedroom: One king bed, one sofa bed, two rollaways and one crib (additional fee applies for rollaway)</li> <li>• Two-bedroom: Two king beds, one sofa bed, two rollaways and two cribs (additional fee applies for rollaway)</li> <li>• Three-bedroom: Three king beds, one sofa bed, two rollaways and three cribs (additional fee applies to rollaway)</li> </ul>
<b>BATHROOMS</b>	<ul style="list-style-type: none"> <li>• Up to three full marble bathrooms with deep soaking tub, separate glass-enclosed shower, and a mirror with integrated television (master bathroom only)</li> <li>• Guest powder room</li> </ul>
<b>LIVING/DINING AREA</b>	<ul style="list-style-type: none"> <li>• Expanded living room, including a 55-inch (140-centimetre) flat-screen LED television with 60 high-definition channels, a media hub and an upgraded electronics package</li> <li>• Separate dining room, seating eight</li> <li>• Large kitchen pantry with a full-size refrigerator, deluxe coffee and tea service, and various appliances</li> <li>• Generously proportioned desk and ergonomic task chair</li> </ul>
<b>MASTER BEDROOM</b>	<ul style="list-style-type: none"> <li>• Floor-to-ceiling windows with stunning panoramic views</li> <li>• Walk-in closet with bench for seating</li> <li>• 47-inch (120-centimetre) flat-screen LED television</li> </ul>
<b>HIGHLIGHTS</b>	<ul style="list-style-type: none"> <li>• Complimentary resort fee</li> <li>• Fresh orchids</li> <li>• High-speed wireless Internet</li> <li>• iPod docking station</li> <li>• On-site tech support to assist with special needs</li> </ul>





THE STRIKING  
SUNRISE/SUNSET  
SUITES







## SUNRISE/SUNSET SUITES

With floor-to-ceiling windows facing in two directions, these dazzling 1,500-sq.-ft. (139-m<sup>2</sup>) one-bedroom suites provide sunrise or sunset views over the mountains or the Red Rock Canyon National Conservation Area.

A formal entry foyer with powder room leads to an expansive living area, including a study, living room, and dining room served from a kitchen pantry. The master bedroom features a walk-in closet and marble bath. These suites are also available with two or three bedrooms.

[VIEW FLOOR PLAN ▶](#)

[COMPARISON CHART ▶](#)

[SUITE AMENITIES ▶](#)

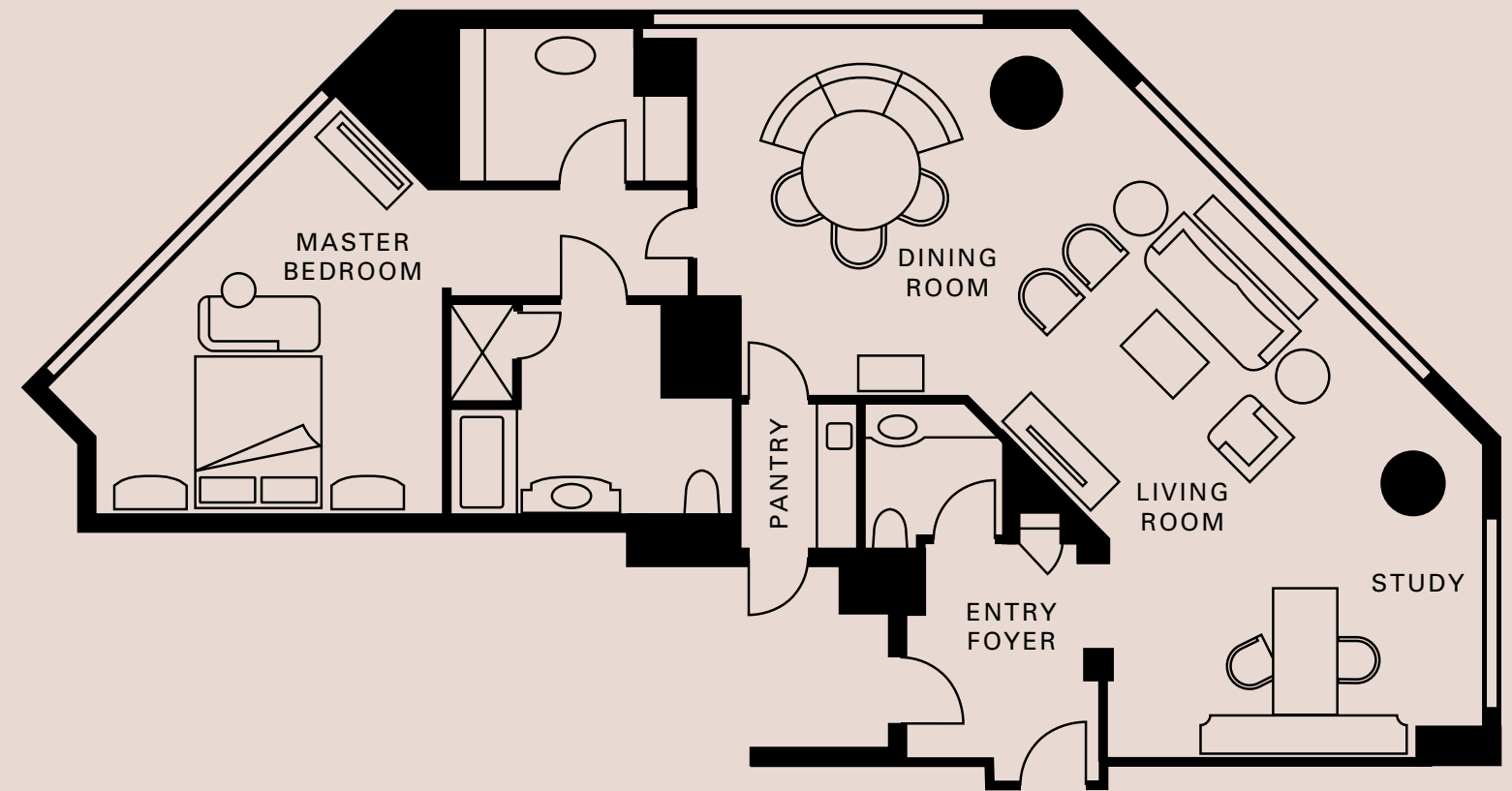
[MORE INFORMATION  
ON \[FOURSEASONS.COM\]\(http://FOURSEASONS.COM\)](#)

[RATES AND AVAILABILITY ▶](#)



# SUNRISE/SUNSET SUITES

<b>SIZE</b>	<ul style="list-style-type: none"> <li>• One-bedroom: 1,500 sq. ft. (139 m<sup>2</sup>)</li> <li>• Two-bedroom: 2,000 sq. ft. (186 m<sup>2</sup>)</li> <li>• Three-bedroom: 2,500 sq. ft. (232 m<sup>2</sup>)</li> </ul>
<b>NUMBER OF SUITES</b>	10
<b>LOCATION</b>	35th to 39th floors
<b>VIEW</b>	Sunset/sunrise over the mountains and surrounding desert
<b>OCCUPANCY</b>	<ul style="list-style-type: none"> <li>• One-bedroom: 4 adults or 2 adults and 3 children</li> <li>• Two-bedroom: 7 adults or 4 adults and 4 children</li> <li>• Three-bedroom: 10 adults or 6 adults and 5 children</li> </ul>
<b>BEDS</b>	<ul style="list-style-type: none"> <li>• One-bedroom: One king bed, one sofa bed, two rollaways and one crib (additional fee applies for rollaway)</li> <li>• Two-bedroom: Two king beds, one sofa bed, two rollaways and two cribs (additional fee applies for rollaway)</li> <li>• Three-bedroom: Two king beds, one sofa bed and two double beds, three rollaways and three cribs (additional fee applies to rollaway)</li> </ul>
<b>BATHROOMS</b>	<ul style="list-style-type: none"> <li>• Up to three full marble bathrooms with deep soaking tub, separate glass-enclosed shower, and a mirror with integrated television (master bathroom only)</li> <li>• Guest powder room</li> </ul>
<b>LIVING/DINING AREA</b>	<ul style="list-style-type: none"> <li>• Expansive living room flowing to an open dining room</li> <li>• Generously proportioned desk and an ergonomic task chair in the separate work area</li> <li>• Kitchen pantry with coffee maker</li> </ul>
<b>MASTER BEDROOM</b>	<ul style="list-style-type: none"> <li>• Stunning views of the sunrise or sunset through floor-to-ceiling windows</li> <li>• Walk-in closet</li> <li>• 47-inch (120-centimetre) flat-screen LED television</li> </ul>
<b>HIGHLIGHTS</b>	<ul style="list-style-type: none"> <li>• Private bar</li> <li>• High-speed wireless Internet</li> <li>• iPod docking station</li> </ul>







THE EXPANSIVE  
VALLEY-VIEW  
SUITES





## VALLEY-VIEW SUITES

With a panorama of the valley, mountains and desert, our 1,700-sq.-ft. (158-m<sup>2</sup>), one-bedroom Valley-View Suites promise a deluxe Las Vegas experience.

The entrance features a formal foyer with a guest powder room and walk-in closet. Continue through to the private study and the formal dining area, served by a large kitchen pantry. The focalpoint is the living room – designed for entertaining with a focus on the floor-to-ceiling desert-valley view. Perfect for late sleepers, the window-free master bedroom includes a walk-in closet and ensuite marble bathroom. These suites are also available with two bedrooms.

[VIEW FLOOR PLAN ▶](#)

[COMPARISON CHART ▶](#)

[SUITE AMENITIES ▶](#)

[MORE INFORMATION ON FOURSEASONS.COM](#)

[RATES AND AVAILABILITY ▶](#)





## VALLEY-VIEW SUITES

<b>SIZE</b>	<ul style="list-style-type: none"> <li>• One-bedroom: 1,700 sq. ft. (158 m<sup>2</sup>)</li> <li>• Two-bedroom: 2,200 sq. ft. (204 m<sup>2</sup>)</li> </ul>
<b>NUMBER OF SUITES</b>	5
<b>LOCATION</b>	35th to 39th floors
<b>VIEW</b>	Mountain ranges, valley and desert
<b>OCCUPANCY</b>	<ul style="list-style-type: none"> <li>• One-bedroom: 4 adults or 2 adults and 3 children</li> <li>• Two-bedroom: 7 adults or 4 adults and 4 children</li> </ul>
<b>BEDS</b>	<ul style="list-style-type: none"> <li>• One-bedroom: One king bed, one sofa bed, two rollaways and one crib (additional fee applies for rollaway)</li> <li>• Two-bedroom: Two king beds, one sofa bed, two rollaways and two cribs (additional fee applies for rollaway)</li> </ul>
<b>BATHROOMS</b>	<ul style="list-style-type: none"> <li>• Up to two full marble bathrooms with deep soaking tub, separate glass-enclosed shower, and a mirror with integrated television (master bathroom only)</li> <li>• Guest powder room</li> </ul>
<b>LIVING/DINING AREA</b>	<ul style="list-style-type: none"> <li>• Pullout sofa bed – making the suite flexible for families</li> <li>• Dining table for six</li> <li>• Large kitchen pantry with full-size refrigerator, deluxe coffee and tea service, and various appliances</li> <li>• Generously proportioned desk and ergonomic task chair</li> </ul>
<b>MASTER BEDROOM</b>	<ul style="list-style-type: none"> <li>• Stunning views through floor-to-ceiling windows</li> <li>• 47-inch (120-centimetre) flat-screen LED television</li> </ul>
<b>HIGHLIGHTS</b>	<ul style="list-style-type: none"> <li>• Two walk-in closets (in foyer and master bedroom)</li> <li>• High-speed wireless Internet</li> <li>• iPod docking station</li> </ul>







### THE COVETED

## STRIP-VIEW ONE-BEDROOM SUITES

Floor-to-ceiling windows in our Strip-View One-Bedroom Suites provide a postcard perspective of the iconic marquees of the Las Vegas Strip. With a large living room for relaxing and entertaining, these 1,100-sq.-ft. (102-m<sup>2</sup>) suites feature bold colors and chic, sophisticated design. The bedroom includes a sitting area, abundant closet space and an ensuite bathroom. An additional powder room for guests is located at the entrance.

[VIEW FLOOR PLAN ▶](#)  
[COMPARISON CHART ▶](#)  
[SUITE AMENITIES ▶](#)

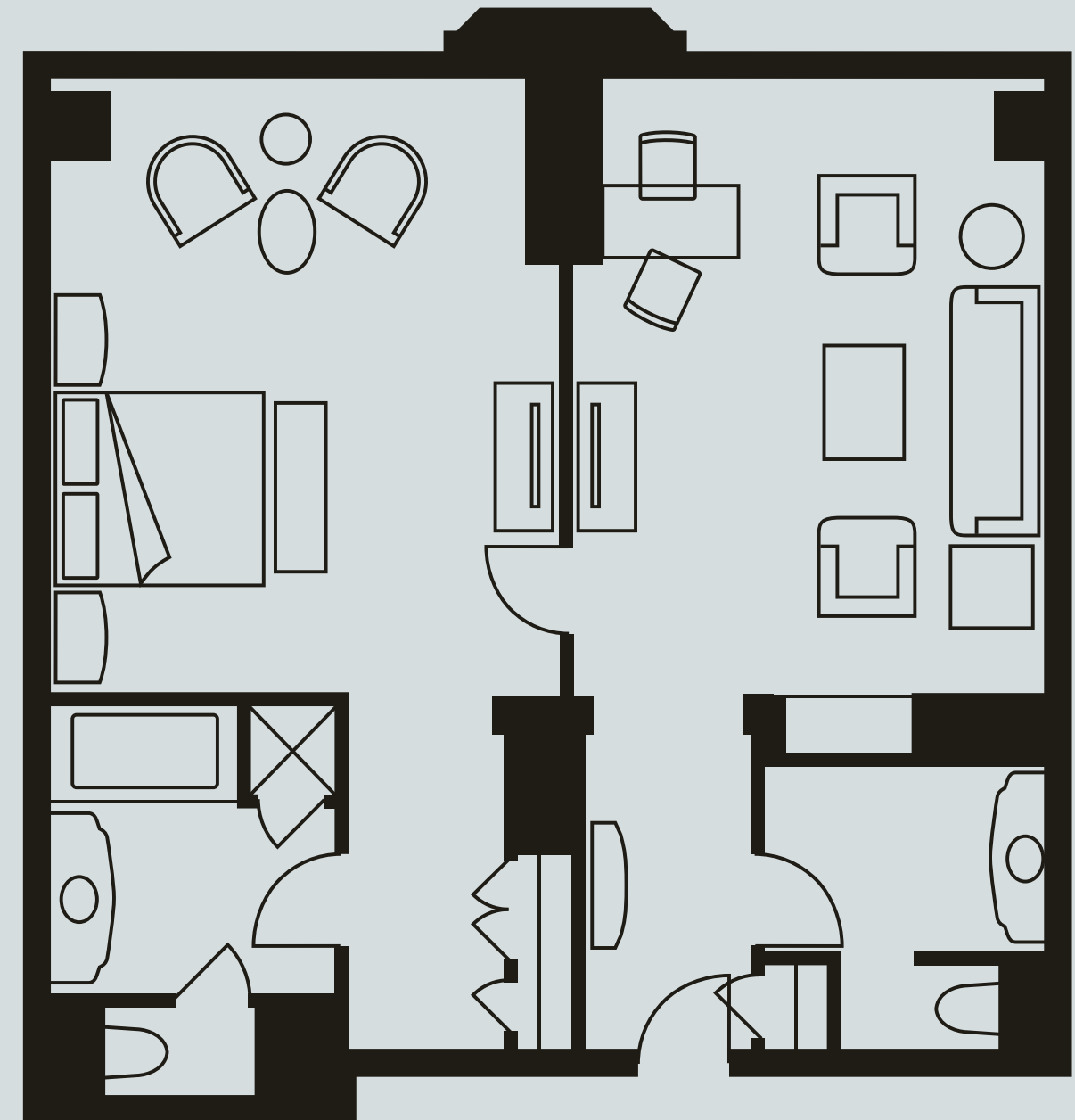
MORE INFORMATION  
ON [FOURSEASONS.COM](#)

[RATES AND AVAILABILITY ▶](#)



## STRIP-VIEW ONE-BEDROOM SUITES

<b>SIZE</b>	One-bedroom: 1,100 sq. ft. (102 m <sup>2</sup> )
<b>NUMBER OF SUITES</b>	15
<b>LOCATION</b>	35th to 39th floors
<b>VIEW</b>	Las Vegas Strip
<b>OCCUPANCY</b>	• One-bedroom: 4 adults or 2 adults and 3 children
<b>BEDS</b>	• One-bedroom: One king bed, one sofa bed, one rollaway and one crib (additional fee applies for rollaway)
<b>BATHROOMS</b>	<ul style="list-style-type: none"> <li>• One full marble bathroom with deep soaking tub, separate glass-enclosed shower, and a mirror with integrated television (master bathroom only)</li> <li>• Guest powder room</li> </ul>
<b>LIVING/DINING AREA</b>	<ul style="list-style-type: none"> <li>• Spacious seating area with a double sofa bed and two chairs</li> <li>• 55-inch (140-centimetre) flat-screen LED television</li> <li>• Generously proportioned desk and ergonomic task chair</li> </ul>
<b>MASTER BEDROOM</b>	<ul style="list-style-type: none"> <li>• Sweeping views through floor-to-ceiling windows</li> <li>• Sitting area</li> <li>• Abundant closet space</li> <li>• 47-inch (120-centimetre) flat-screen LED television</li> </ul>
<b>HIGHLIGHTS</b>	<ul style="list-style-type: none"> <li>• Private bar</li> <li>• High-speed wireless Internet</li> <li>• iPod docking station</li> </ul>

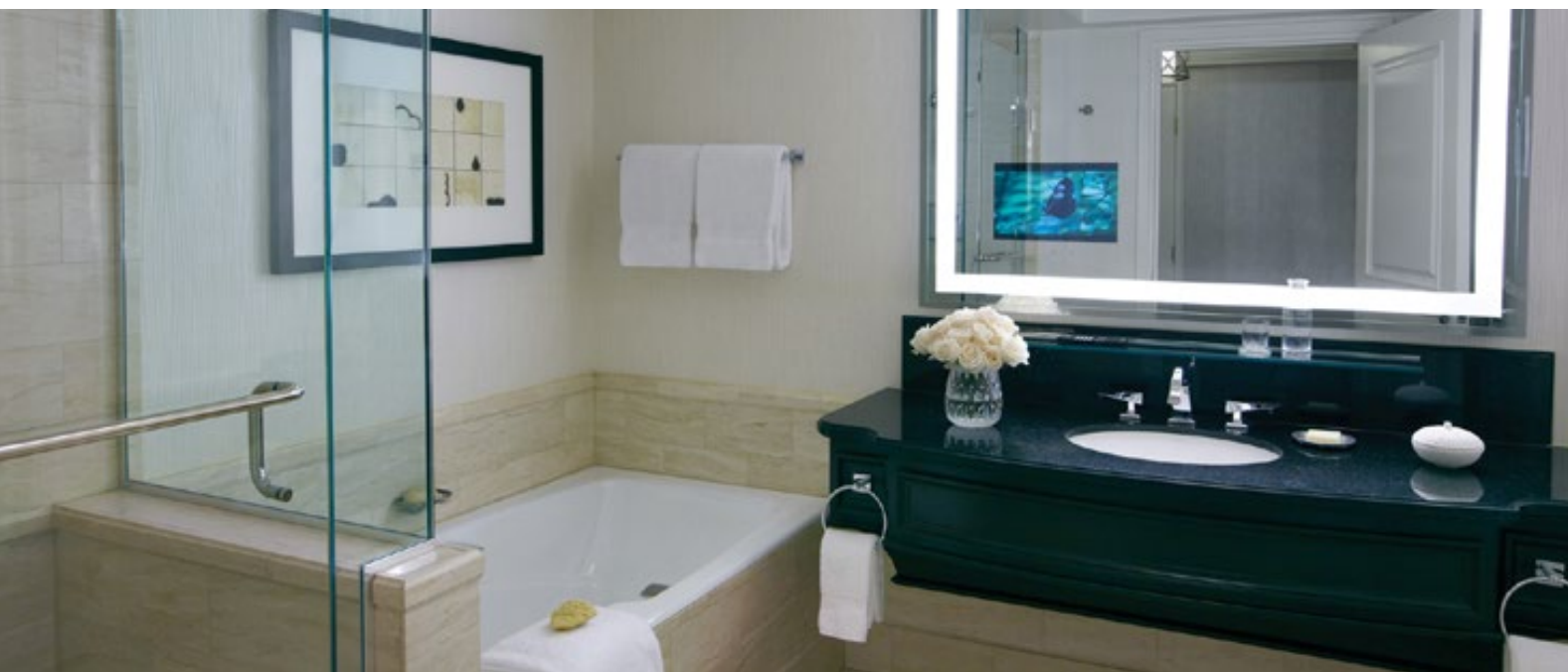






## THE DELUXE ONE-BEDROOM SUITES

With views of the Las Vegas mountains and desert, our 1,100-sq.-ft. (102-m<sup>2</sup>) One-Bedroom Suites welcome you into a large separate living room with an executive desk and powder room. The spacious bedroom features your choice of a king bed or two double beds, along with a sitting area and full marble bathroom. These suites are also available with two or three bedrooms.



[VIEW FLOOR PLAN ▶](#)  
[COMPARISON CHART ▶](#)  
[SUITE AMENITIES ▶](#)

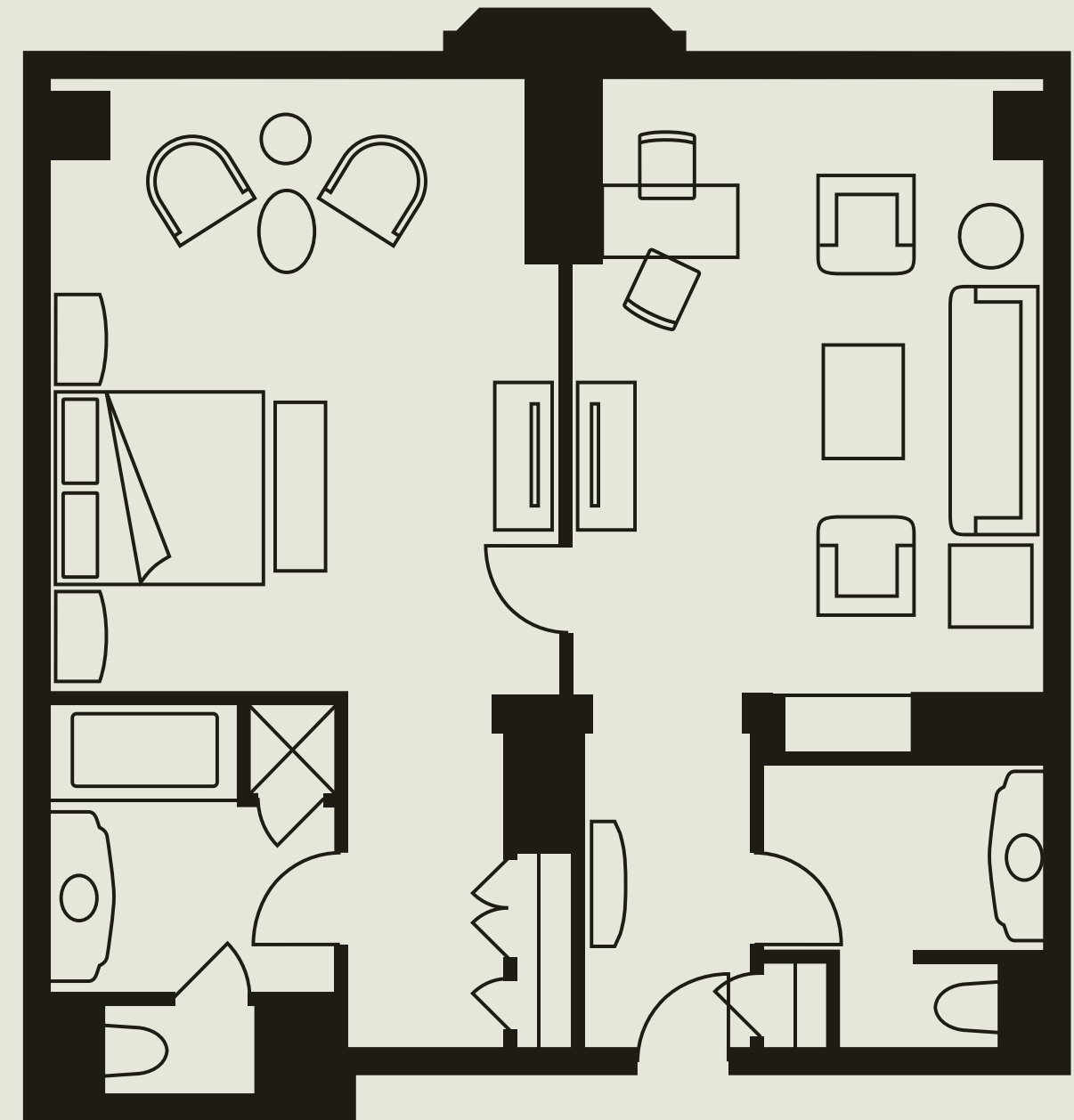
[MORE INFORMATION  
ON FOURSEASONS.COM](#)

[RATES AND AVAILABILITY ▶](#)



# ONE-BEDROOM SUITES

<b>SIZE</b>	<ul style="list-style-type: none"> <li>• One-bedroom: 1,100 sq. ft. (102 m<sup>2</sup>)</li> <li>• Two-bedroom: 1,650 sq. ft. (153 m<sup>2</sup>)</li> <li>• Three-bedroom: 2,200 sq. ft. (204 m<sup>2</sup>)</li> </ul>
<b>NUMBER OF SUITES</b>	35
<b>LOCATION</b>	35th to 39th floors
<b>VIEW</b>	Mountains and desert
<b>OCCUPANCY</b>	<ul style="list-style-type: none"> <li>• One-bedroom: 4 adults or 2 adults and 3 children</li> <li>• Two-bedroom: 7 adults or 4 adults and 4 children</li> <li>• Three-bedroom: 10 adults or 6 adults and 5 children</li> </ul>
<b>BEDS</b>	<ul style="list-style-type: none"> <li>• One-bedroom: One king bed or two double beds, one sofa bed, one rollaway and one crib (additional fee applies for rollaway)</li> <li>• Two-bedroom: One king bed and two double beds or two king beds, one sofa bed two rollaway beds and two cribs (additional fee applies for rollaway)</li> <li>• Three-bedroom: Two king beds and two double beds, one sofa bed, three rollaway beds and three cribs (additional fee applies for rollaway)</li> </ul>
<b>BATHROOMS</b>	<ul style="list-style-type: none"> <li>• Up to three full marble bathrooms with deep soaking tub, separate glass-enclosed shower, and a mirror with integrated television (master bathroom only)</li> <li>• Guest powder room</li> </ul>
<b>LIVING/DINING AREA</b>	<ul style="list-style-type: none"> <li>• Spacious seating area with a double sofa bed and two chairs</li> <li>• 55-inch (140-centimetre) flat-screen LED television</li> <li>• Generously proportioned desk and ergonomic task chair</li> </ul>
<b>MASTER BEDROOM</b>	<ul style="list-style-type: none"> <li>• Sweeping views through floor-to-ceiling windows</li> <li>• Sitting area</li> <li>• Abundant closet space</li> <li>• 47-inch (120-centimetre) flat-screen LED television</li> </ul>
<b>HIGHLIGHTS</b>	<ul style="list-style-type: none"> <li>• Private bar</li> <li>• High-speed wireless Internet</li> <li>• iPod docking station</li> </ul>







### THE LUXURIOUS

## FOUR SEASONS EXECUTIVE SUITES

Ideal for business trips, casual meetings or relaxing in spacious comfort, our Four Seasons Executive Suites measure 810 sq. ft. (75 m<sup>2</sup>) and offer sleek, modern design. The smartly efficient layout includes a separate living room and bedroom, both with TV and sitting areas. Floor-to-ceiling windows inspire with views of the desert landscape.

[VIEW FLOOR PLAN ▶](#)  
[COMPARISON CHART ▶](#)  
[SUITE AMENITIES ▶](#)

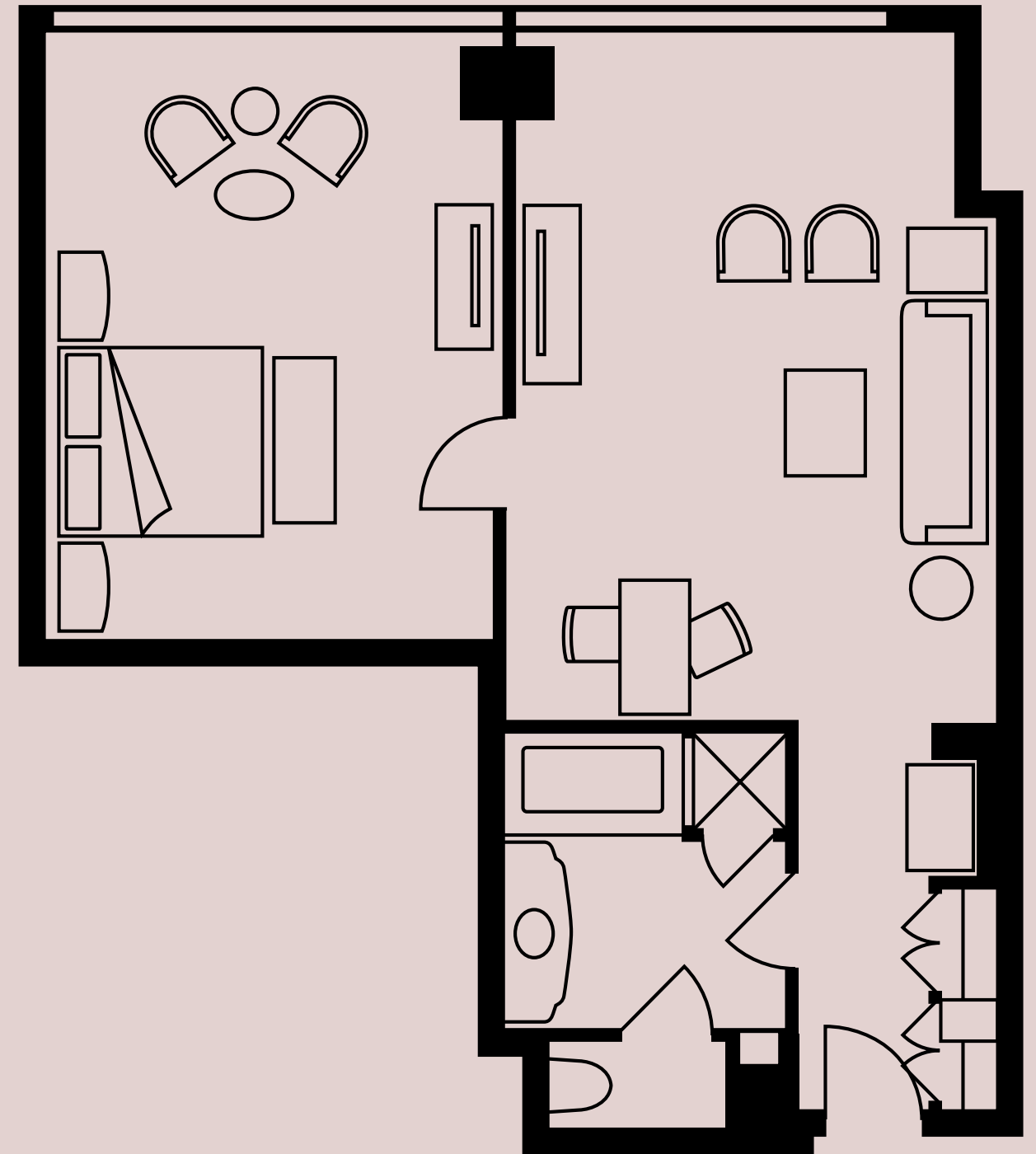
MORE INFORMATION  
ON [FOURSEASONS.COM](#)

[RATES AND AVAILABILITY ▶](#)



## FOUR SEASONS EXECUTIVE SUITES

<b>SIZE</b>	810 sq. ft. (75 m <sup>2</sup> )
<b>NUMBER OF SUITES</b>	11
<b>LOCATION</b>	35th to 39th floors
<b>VIEW</b>	Mountains, valley or desert
<b>OCCUPANCY</b>	3 adults or 2 adults and 2 children
<b>BEDS</b>	One king bed, one sofa bed, one rollaway bed and one crib (additional fee applies for rollaway)
<b>BATHROOMS</b>	One full marble bathroom with integrated television
<b>LIVING/DINING AREA</b>	<ul style="list-style-type: none"> <li>• Living area separated by doors from the bedroom, adding privacy</li> <li>• 55-inch (140-centimetre) LED television in the living room</li> <li>• Multimedia hub on the television credenza, which allows you to charge your personal electronic devices and enjoy your favorite media</li> <li>• Generously proportioned desk and ergonomic task chair</li> </ul>
<b>MASTER BEDROOM</b>	<ul style="list-style-type: none"> <li>• Stunning views of the horizon and majestic mountain ranges through floor-to-ceiling windows</li> <li>• Sitting area</li> <li>• 47-inch (120-centimetre) flat-screen LED television</li> </ul>
<b>HIGHLIGHTS</b>	<ul style="list-style-type: none"> <li>• Private bar</li> <li>• High-speed wireless Internet</li> <li>• iPod docking station</li> </ul>







## COMPARISON CHART

SUITES	NUMBER	SIZE	LOCATION	OCCUPANCY	VIEW	BEDS	BATHROOMS
Presidential Strip-View Suite	5	2,225 sq.ft. (207 m <sup>2</sup> )	35 to 39th floors	4 adults, or 2 adults and 3 children	Entire Las Vegas strip, including the sunrise over the city	One king bed	One full marble bathroom, plus guest powder room
Sunrise/Sunset Suite	10	1,500 sq.ft. (139 m <sup>2</sup> )	35 to 39th floors	4 adults, or 2 adults and 3 children	Sunset/sunrise with mountains and surrounding desert	One king bed	One full marble bathroom, plus guest powder room
Valley-View Suite	5	1,700 sq.ft. (158 m <sup>2</sup> )	35 to 39th floors	4 adults, or 2 adults and 3 children	Mountain ranges, valley and desert	One king bed	One full marble bathroom, plus guest powder room
Strip-View One-Bedroom Suite	15	1,100 sq.ft. (102 m <sup>2</sup> )	35 to 39th floors	4 adults, or 2 adults and 3 children	Las Vegas strip	One king bed	One full marble bathroom, plus guest powder room
One-Bedroom Suite	35	1,100 sq.ft. (102 m <sup>2</sup> )	35 to 39th floors	4 adults, or 2 adults and 3 children	Mountains and desert	One king or two double beds	One full marble bathroom, plus guest powder room
Four Seasons Executive Suite	11	810 sq.ft. (75 m <sup>2</sup> )	35 to 39th floors	3 adults, or 2 adults and 2 children	Mountains, valley and desert	One king bed	One full marble bathroom

MORE INFORMATION ON [FOURSEASONS.COM](https://www.fourseasons.com)  
 LEARN MORE ABOUT OUR GUEST ROOMS ►





# SUITE AMENITIES

## BED & BATH

- Down duvets
- Down pillows
- Hair dryer
- Hypoallergenic pillows on request
- Thick terry bathrobes
- Marble bathrooms with backlit mirrors and an integrated television system

## INTERNET ACCESS

- Wired and wireless Internet access

## SERVICES & AMENITIES

- Twice-daily housekeeping service
- Multi-line telephone(s) with voicemail and conference call capability

## ENTERTAINMENT

- 55-inch (140-centimetre) LED television with multimedia hub in the living room
- 47-inch (119-centimetre) television in bedroom
- All-news cable network
- iPod docking station
- Daily newspaper delivery

## ROOM FEATURES

- In-room safe
- Refrigerated private bar
- Coffee- and tea-making facilities





# HOTEL OVERVIEW

## LOCATION

- On the south end of the Las Vegas Strip, within the Mandalay Bay complex
- Separate Four Seasons driveway, lobby and amenities; direct indoor access to the Mandalay Bay casino
- Easily accessible from Interstate 15; ample on-site parking
- 15 minutes (3 miles/4.8 kilometres) from McCarran International Airport (LAS)

## ACCOMMODATIONS

- 424 stylish guest rooms, including 81 suites, elevated on floors 35 to 39 of the Mandalay Bay tower
- Floor-to ceiling windows with views of the glittering Las Vegas Strip, the desert and mountains
- The new Four Seasons Bed, customizable for individual comfort
- Spacious marble bathroom with oversized tub, glass-enclosed shower and backlit mirror with an integrated television (master bathrooms only)

## DINING

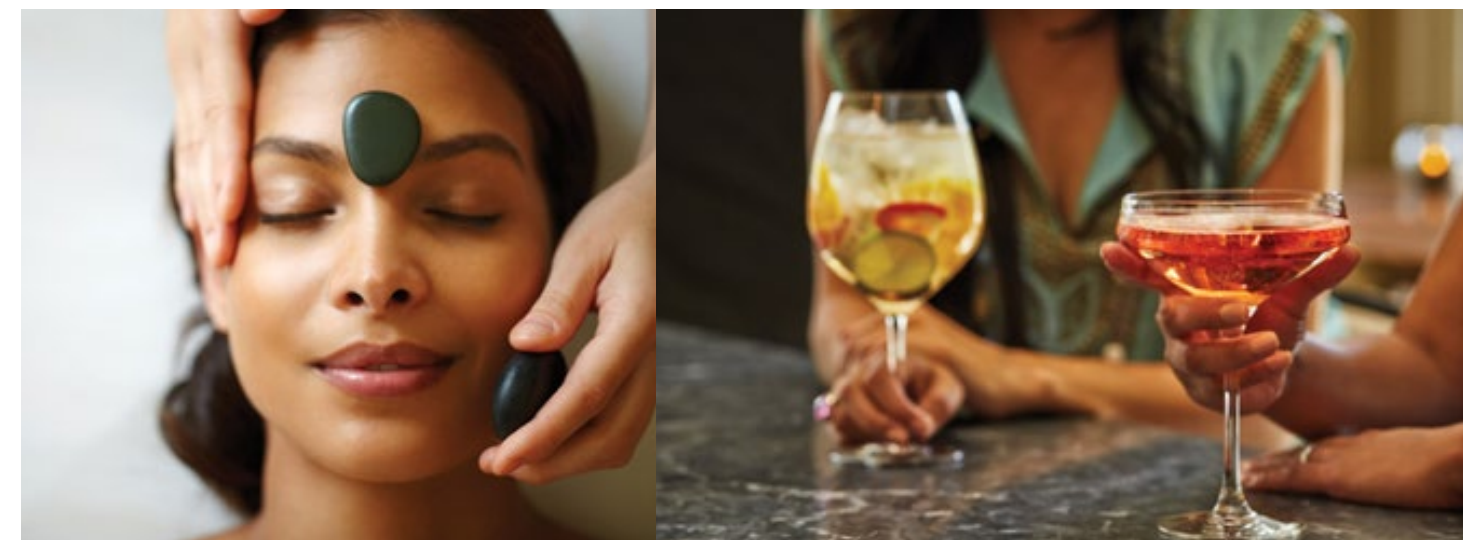
- Veranda for Italian trattoria cuisine, indoors or al fresco
- Veranda Bar for wine and specialty cocktails, in addition to small plates and happy-hour specials
- Charlie Palmer Steak, an innovative steakhouse, featuring steak and seafood favourites
- Charlie Palmer Steak Bar – dark, comfortable and inviting
- Pool Bar, serving an informal poolside lunch menu
- PRESS, a lobby bar, featuring a lushly landscaped outdoor patio with sofa seating overlooking the pool
- Additional dining options within Mandalay Bay
- 24-hour In-Room Dining

## SPA & RECREATION

- Exclusive Four Seasons outdoor pool and whirlpool
- Access to Mandalay Bay pools for families and adults
- Expansive five-star spa, including 15 treatment rooms, specializing in results-oriented treatments
- 10,700-sq.-ft. (995-m<sup>2</sup>) fitness center, featuring state-of-the-art cardio- and strength-training equipment
- Luxurious men's and women's locker rooms, relaxation lounges and steam rooms

## MEETINGS & EVENTS

- 28,300 sq. ft. (2,629 m<sup>2</sup>) of recently refreshed function space, ideal for gala banquets, private receptions and meetings for 9 to 900 guests
- Meet & Feed events for 300; banquets for 650
- Two ballrooms and eight function rooms – many with natural light – plus three outdoor event spaces





BOOK YOUR  
SUITE STAY

IF YOU HAVE ANY QUESTIONS, CONTACT US:

FOUR SEASONS HOTEL LAS VEGAS

3960 Las Vegas Boulevard South

Las Vegas, Nevada 89119

T. +1 (702) 632-5000 / F. +1 (702) 632-5195

Connect with us

[fourseasons.com/lasvegas](https://www.fourseasons.com/lasvegas)

